

Homelessness in Tucson/Pima County

Characteristics of People Accessing Homeless Services

**For the Period from
July 1, 2010 to June 30, 2011**

Data from the Tucson/Pima County
Homeless Management Information System (HMIS)



Table of Contents

About This Report.....	3
Introduction.....	3
Purpose	3
Methods and Data Limitations.....	3
Summary	5
Summary of Persons Accessing Services by Program Type	8
Annual Report of Clients Served.....	9
Demographics: Gender & Age	10
Demographics: Ethnicity, Race, Veterans, Domestic Violence Victims, Disabilities, and Unaccompanied Youth	11
Households	12
Prior Living Situation: Residence Prior to Program Entry.....	13
Prior Living Situation: Stability of Prior Residence & Zip Code of Last Permanent Housing	14
Exit Destinations	15
Further Characteristics: Disabilities, Employment, & Education.....	16
Income and Benefits : Amounts & Sources of Income at Entry	17
Income and Benefits : Sources of Non-Cash Benefits at Entry	18
Special Report : Youth - Unaccompanied Youth.....	19
Special Report : Youth - Youth Parents.....	20
Special Report : Youth - Youth in Families.....	21
Point-in-Time Reports.....	22
Demographics: Gender & Age	23
Demographics: Ethnicity, Race, Veterans, Domestic Violence Victims, Disabilities, and Unaccompanied Youth	24
Households	25
Glossary	26
Agencies Providing Data	28
For More Information.....	29

About This Report

Introduction

This report presents information about homelessness in Tucson and Pima County based on data from the Homelessness Management Information System (HMIS). HMIS is a computerized data collection tool designed to record and store client-level information on the characteristics and service needs of homeless persons. The U.S. Department of Housing and Urban Development (HUD) requires homeless service providers who receive HUD funding to use HMIS and encourages all other homeless service providers to participate in HMIS. HMIS was implemented locally by the Tucson Pima Collaboration to End Homelessness (TPCH) and Pima County beginning in October 2008. Homeless service providers in Pima County include, but are not limited to, organizations that provide emergency shelter, transitional housing, rental assistance and case management (homeless prevention), permanent supportive housing, outreach services, employment/workforce development services, and drop-in programs that provide food, hygiene, transportation, and communication services.

Numerous organizations, such as food pantries, health care providers, and other supportive service providers, serve homeless persons without HUD funding and are thus not required to use HMIS. While TPCH encourages these organizations to utilize HMIS in order to gain a more complete picture of homelessness in Pima County, for many it is not possible due to a lack of capacity. In addition, federal law prohibits dedicated Domestic Violence shelters from using HMIS. At the time of this report, over 90% of known homeless service agencies in Tucson/Pima County participated in HMIS.

Communities throughout the U.S. use HMIS data for local planning and evaluation, and also report their data to HUD where it is compiled in the Homelessness Data Exchange and presented in an Annual Homelessness Assessment Report. For more information, please go to www.hmis.info. For more information about the Tucson Pima Collaboration to End Homelessness, please go to www.tpch.org.

Purpose

The *Homelessness in Tucson/Pima County* report is intended to provide information to community residents, service providers, journalists, government officials, neighborhood and civic leaders to improve our community's understanding of the prevalence and causes of homelessness. This HMIS report and future reports will contribute to understanding special populations, discerning trends, assessing changes in service needs, and documenting outcomes.

Methods and Data Limitations

The data contained in this report are gathered from ServicePoint, an HMIS software program designed by Bowman Systems. HUD has established a national set of HMIS Data Standards to ensure consistency of data fields across organizations. The data fields described in the standards have been incorporated into the ServicePoint software design.

Data are self-reported by individuals during program intake procedures which typically consist of interview-type questions and the completion of forms. Except where identified, data are collected from those receiving services and their dependants at program entry. Data are entered into ServicePoint by trained and licensed users at the participating homeless provider agencies.

Homelessness in Tucson/Pima County

This report is compiled through extracting data from ServicePoint, beginning 15 days following the final day of a reporting period. Reporting periods of 12 months run from January to December or July to June. Point-in-time data is also collected on the last day of the 12-month reporting period, and cover data for individuals and families currently in programs, i.e. those lacking a program exit date, in order to provide a snapshot of homeless services accessed on a single day in Pima County.

Data are considered complete and valid for reporting if 60% or more of individual fields were complete for the reporting time frame, i.e., did not have missing data. A field that does not have 60% or more completed (“non-null”) entries is excluded from the report, except where noted.

Data are generally organized by program type, which indicates the source of the data as well as what type of service is provided.

Emergency Shelter - Any facility whose primary purpose is to provide temporary shelter for those who are experiencing homelessness in general or for specific populations of homeless people. This can also include emergency motel/hotel voucher assistance.

Transitional Housing - A project that has its purpose facilitating the movement of homeless individuals and families to permanent housing within a reasonable amount of time (usually 24 months).

Permanent Supportive Housing - Long-term, community-based housing that has supportive services for homeless persons with disabilities.

HPRP (Homelessness Prevention and Rapid Re-Housing Program)- A Recovery Act program, HPRP is to provide homelessness prevention assistance to households who would otherwise become homeless and to provide assistance to rapidly re-house persons who are homeless.

Non-Residential Services - Represents any programming and supportive services offered to homeless participants that does not consist of housing or shelter. Examples of Non-Residential Services can include, but is not limited to, outreach, day or drop-in centers, food assistance, and employment programs.

The data contained in each program type or each reporting category are unduplicated within itself; however, because persons can participate in several programs at the same time (such as emergency shelter and non-residential services) there may be some duplication across program types. If an individual accesses a program more than once during a reporting period, the first response is reported on in efforts to capture data closest to onset of homelessness.

In data tables, “counts” represent the actual numbers of persons in each category and “percents” (%) are calculated from the total unduplicated number of individuals who access homeless services during the reporting period, unless otherwise noted. “Unknown/refused” fields are used when possible. Some providers, typically high-volume emergency shelters, do not complete all data fields.

This report provides a basic picture of the homeless and/or low income population in Pima County. This is not a complete picture of homelessness in Tucson or Pima County because the numbers provided in this report only represent individuals and families accessing services at agencies that use the Homeless Management Information System (HMIS). Therefore, this report does not include individuals who do not access services or individuals who access services at organizations not participating in HMIS. Additionally, in some ways this report illustrates the capacity of homeless services in Pima County, rather than the true need of services. This is because the data reported upon are collected largely through agencies that have a fixed number of individuals and households that services can be provided to, such as emergency shelter beds or transitional housing units. Both of these factors limit the ability of this report to comment on the true numbers of homeless persons and the need for homeless services in Pima County.

Summary

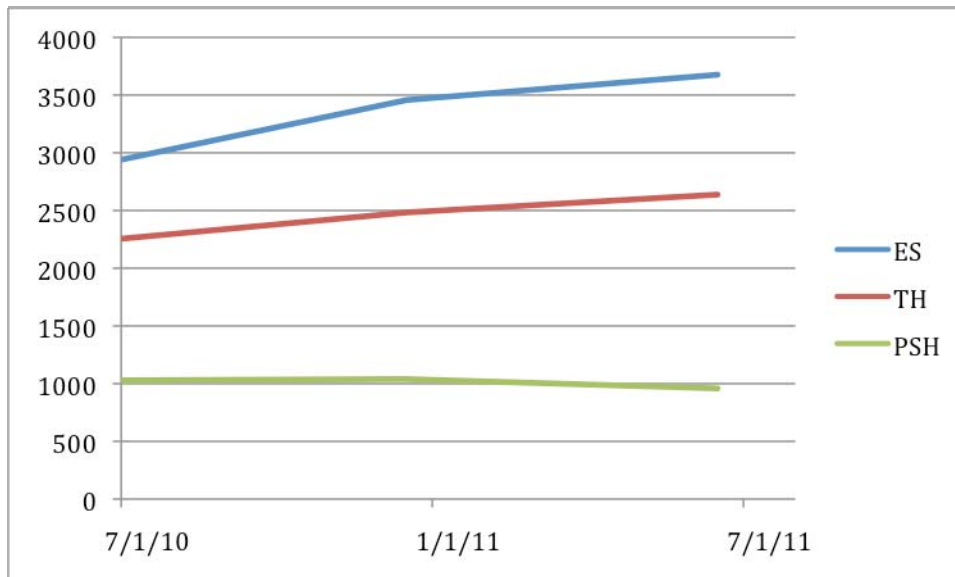
The *Homelessness in Tucson/Pima County* report presents data for two time periods: a 12-month period from July 1, 2010 through June 30, 2011, and a one-day point-in-time snapshot from June 30, 2011. Both of these sections represent homeless persons who accessed services from homeless service providers who participated in HMIS.

How Many People Accessed Homeless Services?

From July 1, 2010 through June 30, 2011, 8,844 unduplicated individuals utilized homeless services at some point during the 12-month period. Of these, 79% were adults and 21% were children under age 18. A total of 5,892 households accessed services.

Of those individuals receiving services, 6,315 unduplicated individuals received shelter in emergency shelters or transitional housing programs.

On a single day (June 30, 2011), 3,981 unduplicated individuals accessed services. Of these, 76% were adults and 24% were children under age 18. A total of 3,118 households were provided with services on this day. The following graph shows 12-month period ending points for people accessing services.



ES = Emergency Shelters TH = Transitional Housing PSH = Permanent Supportive Housing

Characteristics of Homeless Persons Who Accessed Services During the 12-month Period

Those accessing services from July 1, 2010 through June 30, 2011 were 64% male and 36% female. Emergency shelters served 74% males and 26% females.

Seventy-five percent (75%) of those served were adults (age 18-61), 5% were older adults (62+) and 22% were children. Emergency Shelters, Permanent Supportive Housing, and Non-Residential programs primarily served adults while transitional housing served 24% children and HPRP served 49% children.

Almost one-third of those served were Hispanic/Latinos (32%). African Americans made up 13% of those accessing services, which is approximately three times higher than the proportion in the general metropolitan Tucson population. Homeless service recipients included 15% veterans, 12% victims of domestic violence, 34% with a disability of long duration, and 5% who were unaccompanied youth.

Forty-three percent (43%) of adults accessing services reported having a disability of long duration. Of these, the most common disabilities reported were mental illness and addiction disorders. Eighteen percent of adults were employed, and over six out of ten were looking for work. Less than half of adults had a high school education or GED; 22% had some college or a college degree.

Prior Living Situation

Those seeking homeless services came to programs from a variety of residence situations: 41% had been homeless, 8% were from institutional settings, and 51% had previously lived in rentals, hotels/motels, or staying with family or friends. These previous living situations varied by type of program. Almost one-third of those entering emergency shelter had come from another shelter, indicating the existence of a population of individuals who cycle through emergency shelters. Those entering transitional housing mostly came from emergency shelters (18%), other transitional housing programs (15%), or had been staying with family or friends (31%). Half of those entering permanent supportive housing had either been sleeping outside (22%) or staying in an emergency shelter (28%).

Most had experienced unstable housing prior to accessing homeless services, although this varied by program type. Seventy percent of those entering emergency shelter had been in their previous living situations for less than 3 months.

Exit Information

Of those leaving homeless service programs, 28% left to live in unsubsidized rentals. Thirty-seven percent (37%) of those exiting permanent supportive housing went to subsidized rentals or permanent supportive housing, indicating their continued need for housing assistance.

Of those exiting emergency shelters, 28% exited to emergency shelters and 29% exited to sleeping outside. Four percent died while living in emergency shelter.

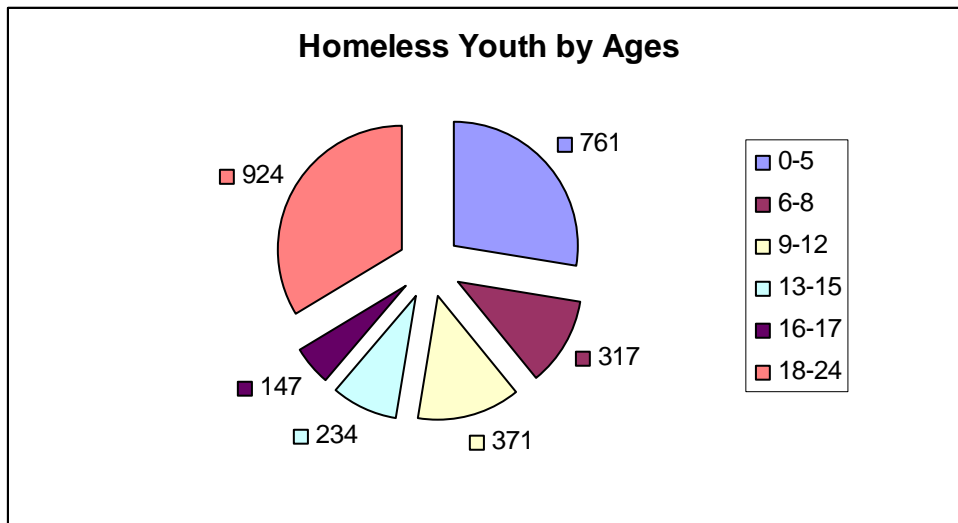
Income/Benefits at Entry and Exit

Of all those accessing homeless services, 42% had some amount of cash income, primarily from employment (45%), social security (16%), and disability (14%). Of those with income, 60% received less than \$1,000 per month.

Of those served by homeless programs, 46% of adults received food stamps and 42% reported receiving AHCCCS health insurance. There were only minor variations in the type of housing program in terms of people accessing non-cash benefits.

Special Report - Youth

For the reporting period, 2,754 unduplicated youth accessed homeless services, either unaccompanied or with their family. The pie chart below provides a breakdown of the youth's ages.



There were 716 unaccompanied youth reported in HMIS during this period. Among unaccompanied youth, only 58% of youth under 18 were enrolled at school. Of the unaccompanied youth ages 18-21, 25% of the youth were enrolled in school, compared with 38% of parenting youth and 62% of youth in families.

Of those reporting education information, less than half, or 44%, of unaccompanied youth aged 18-21 had a high school diploma or GED. And, of unaccompanied youth aged 22-24, 62% had a high school diploma or GED.

Homelessness in Tucson/Pima County

Summary of Persons Accessing Services by Program Type

For the Period from July 1, 2010 - June 30, 2011

Year

	Total Unduplicated		Emergency Shelters		Transitional Housing		Permanent Supportive Housing		HPRP		Non-Residential Programs	
	Count	%	Count	%	Count	%	Count	%	Count	%	Count	%
Total Persons	8844		3677		2638		959		1129		2179	
Adults	6987	79%	3116	85%	2012	76%	798	83%	571	51%	2052	94%
Children	1830	21%	547	15%	623	24%	156	16%	552	49%	123	6%
Age Unknown	27	0%	14	0%	3	0%	5	1%	6	1%	4	0%
Total Households	5892		3208		2155		766		467		2163	

Some persons may be in more than one program type during the year.

One Day Point-in-Time Snapshot on June 30, 2011

	Total Unduplicated		Emergency Shelters		Transitional Housing		Permanent Supportive Housing		HPRP		Non-Residential Programs	
	Count	%	Count	%	Count	%	Count	%		%	Count	%
Total Persons	3981		547		1111		815		660		1158	
Adults	3033	76%	451	82%	768	69%	685	84%	317	48%	1138	98%
Children	937	24%	90	16%	340	31%	125	15%	337	51%	20	2%
Age Unknown	11	0%	6	1%	3	0%	5	1%	6	2%	0	0%
Total Households	3118		491		840	588	658		263		1135	

Some persons may be in Residential and Non-Residential Programs on the same date.

Annual Report of Clients Served

For the Period from July 1, 2010 to June 30, 2011

Homelessness in Tucson/Pima County

Demographics: Gender & Age

For the Period from July 1, 2010 - June 30, 2011

Percents calculated from program totals on p. 8.

CHARACTERISTIC	Total Unduplicated Persons		Emergency Shelters		Transitional Housing		Permanent Supportive Housing		HPRP		Non-Residential Programs	
	Count	%	Count	%	Count	%	Count	%	Count	%	Count	%
GENDER												
Male	5647	64%	2715	74%	1595	60%	529	55%	499	44%	1589	73%
Female	3166	36%	949	26%	1038	39%	425	44%	623	55%	588	27%
Transgender	4	0%	1	0%	1	0%	0	0%	0	0%	2	0%
Unknown/refused	27	0%	12	0%	4	0%	5	1%	7	1%	0	0%
AGE												
0-5	761	9%	269	7%	299	11%	40	4%	196	17%	42	2%
6-8	317	4%	95	3%	102	4%	30	3%	99	9%	20	1%
9-12	371	4%	88	2%	123	5%	40	4%	134	12%	22	1%
13-15	234	3%	63	2%	58	2%	34	4%	75	7%	24	1%
16-17	147	2%	32	1%	41	2%	12	1%	48	4%	15	1%
18-24	924	10%	356	10%	403	15%	52	5%	88	8%	201	9%
25-34	1477	17%	617	17%	466	18%	124	13%	173	15%	372	17%
35-44	1465	17%	652	18%	379	14%	180	19%	150	13%	431	20%
45-61	2719	31%	1290	35%	664	25%	368	38%	146	13%	961	44%
62+	402	5%	201	5%	100	4%	74	8%	14	1%	87	4%
Age Not Specified	27	0%	14	0%	3	0%	5	1%	6	1%	4	0%

Homelessness in Tucson/Pima County

Demographics: Ethnicity, Race, Veterans, Domestic Violence Victims, Disabilities, and Unaccompanied Youth

For the Period from July 1, 2010 - June 30, 2011

Percents calculated from program totals on p. 8.

CHARACTERISTIC	Total Unduplicated Persons		Emergency Shelters		Transitional Housing		Permanent Supportive Housing		HPRP		Non-Residential Programs	
	Count	%	Count	%	Count	%	Count	%	Count	%	Count	%
ETHNICITY												
Hispanic/Latino	2848	32%	1056	29%	856	32%	251	26%	580	51%	554	25%
Non-Hispanic/Non-Latino	5887	67%	2570	70%	1755	67%	698	73%	538	48%	1600	73%
Unknown/refused	109	1%	51	1%	27	1%	10	1%	11	1%	25	1%
RACE												
American Indian/Alaska Native	394	4%	150	4%	107	4%	26	3%	43	4%	141	6%
Asian	35	0%	13	0%	16	1%	4	0%	3	0%	9	0%
Black/African-American	1173	13%	463	13%	383	15%	131	14%	136	12%	309	14%
Native Hawaiian or Other Pacific Islander	26	0%	10	0%	4	0%	3	0%	3	0%	14	1%
White	6183	70%	2549	69%	1826	69%	709	74%	832	74%	1448	66%
Other Multi-Racial	537	6%	213	6%	163	6%	65	7%	53	5%	144	7%
Don't Know/Refused	387	4%	229	6%	106	4%	7	1%	51	5%	89	4%
Not Specified	109	1%	50	1%	33	1%	14	1%	8	1%	25	1%
OTHER												
Veteran	1073	15%	411	13%	539	27%	114	14%	63	11%	280	14%
Domestic Violence Victim	1029	12%	429	12%	469	18%	95	10%	38	3%	199	9%
Disability of Long Duration	3025	34%	917	25%	1222	46%	708	74%	108	10%	807	37%

Homelessness in Tucson/Pima County

Households

For the Period from July 1, 2010 - June 30, 2011

Percents calculated from total persons in singles or in households. Some clients are shown as Singles and Persons in Households due to multiple program entries.

CHARACTERISTIC	Total Unduplicated Persons		Emergency Shelters		Transitional Housing		Permanent Supportive Housing		HPRP		Non-Residential Programs	
	Count	%	Count	%	Count	%	Count	%	Count	%	Count	%
SINGLES												
Adult Male	4317	49%	2515	67%	1148	46%	402	37%	66	6%	1493	51%
Adult Female	1289	15%	357	9%	380	15%	249	23%	61	6%	487	17%
Adult Transgender	4	0%	2	0%	1	0%	0	0%	0	0%	2	0%
Unaccompanied Youth Male (under 18)	40	0%	17	0%	18	1%	3	0%	0	0%	3	0%
Unaccompanied Youth Female (under 18)	32	0%	13	0%	15	1%	1	0%	0	0%	3	0%
Total	5682	65%	2904	77%	1562	62%	655	61%	127	12%	1988	68%
PERSONS IN HOUSEHOLDS												
Adult Male	430	5%	99	3%	101	4%	98	9%	145	14%	754	26%
Adult Female	966	11%	266	7%	299	12%	154	14%	278	26%	66	2%
Children (<18) Male	853	10%	255	7%	273	11%	86	8%	268	25%	63	2%
Children (<18) Female	840	10%	245	7%	283	11%	88	8%	247	23%	55	2%
Total	3089	35%	865	23%	956	38%	426	39%	938	88%	938	32%

Homelessness in Tucson/Pima County

Prior Living Situation: Residence Prior to Program Entry

For the Period from July 1, 2010 - June 30, 2011

Percents calculated from program totals on p. 8.

	Total Unduplicated Persons		Emergency Shelters		Transitional Housing		Permanent Supportive Housing		HPRP	
	Count	%	Count	%	Count	%	Count	%	Count	%
RESIDENCE PRIOR TO PROGRAM ENTRY										
HOMELESS SITUATIONS										
Emergency shelter, including hotel/motel vouchers	1820	21%	1164	32%	470	18%	264	28%	39	3%
Transitional housing for homeless persons	582	7%	102	3%	387	15%	112	12%	29	3%
Safe Haven	19	0%	8	0%	8	0%	1	0%	2	0%
Place not meant for human habitation (e.g. streets)	1176	13%	612	17%	128	5%	207	22%	31	3%
<i>Subtotal</i>	3597	41%	1886	51%	993	38%	584	61%	101	9%
INSTITUTIONAL SETTINGS										
Psychiatric hospital/facility	41	0%	26	1%	11	0%	4	0%	1	0%
Substance abuse treatment facility	221	2%	35	1%	120	5%	66	7%	4	0%
Hospital (non-psychiatric)	110	1%	73	2%	38	1%	6	1%	5	0%
Jail, prison or juvenile detention facility	318	4%	95	3%	207	8%	3	0%	0	0%
Foster care home or foster care group home	48	1%	8	0%	13	0%	17	2%	1	0%
<i>Subtotal</i>	738	8%	237	6%	389	15%	96	10%	11	1%
OTHER LOCATIONS										
Permanent supportive housing	37	0%	3	0%	0	0%	30	3%	1	0%
Apartment or house owned	81	1%	21	1%	16	1%	10	1%	22	2%
Room/apartment/house rented	1485	17%	185	5%	271	10%	97	10%	815	72%
Hotel or motel (no voucher)	258	3%	180	5%	49	2%	4	0%	3	0%
Staying with family	1224	14%	421	11%	575	22%	68	7%	122	11%
Staying with friends	682	8%	338	9%	235	9%	25	3%	44	4%
Other living arrangement	209	2%	100	3%	35	1%	16	2%	0	0%
Unknown/refused	533	6%	306	8%	75	3%	29	3%	10	1%
<i>Subtotal</i>	4509	51%	1554	42%	1256	48%	279	29%	1017	90%
Total	8844	100%	3677	100%	2638	100%	959	100%	1129	100%

Homelessness in Tucson/Pima County

Prior Living Situation: Stability of Prior Residence & Zip Code of Last Permanent Housing

For the Period from July 1, 2010 - June 30, 2011

Percents calculated from program totals on p. 8. Some clients may be shown in multiple zip codes due to multiple program entries.

	Total Unduplicated Persons		Emergency Shelters		Transitional Housing		Permanent Supportive Housing		HPRP	
	Count	%	Count	%	Count	%	Count	%	Count	%
<u>STABILITY OF PRIOR RESIDENCE</u>										
Less than 1 week	1838	21%	1123	31%	423	16%	223	23%	26	2%
> 1 week, < 1 month	1403	16%	839	23%	402	15%	96	10%	93	8%
1 - 3 months	1620	18%	604	16%	717	27%	166	17%	180	16%
3 - 12 months	1651	19%	379	10%	533	20%	229	24%	456	40%
1 year or longer	1481	17%	322	9%	395	15%	211	22%	363	32%
Unknown/refused	851	10%	410	11%	168	6%	34	4%	11	1%
<u>ZIP CODE OF LAST PERMANENT HOUSING</u>										
Tucson	7443	84%	3302	90%	1882	71%	839	87%	936	83%
Other Pima County	810	9%	268	7%	24	1%	53	6%	198	18%
Arizona, excluding Tucson/Pima County	607	7%	287	8%	258	10%	8	1%	8	1%
Outside of Arizona	652	7%	469	13%	76	3%	16	2%	1	0%

Homelessness in Tucson/Pima County

Exit Destinations

For the Period from July 1, 2010 - June 30, 2011

Percentages are based on data from persons exiting who answered this question.

DESTINATION	Total Unduplicated Persons		Emergency Shelters		Transitional Housing		Permanent Supportive Housing		HPRP	
	Count	%	Count	%	Count	%	Count	%	Count	%
PERMANENT DESTINATIONS										
Apartment or house owned, no subsidy	48	1%	10	0%	22	1%	10	4%	7	1%
Apartment or house owned, subsidized	13	0%	2	0%	5	0%	5	2%	0	0%
Room, apartment, or house rented, no subsidy	1507	28%	309	11%	556	35%	40	17%	510	80%
Room, apartment, or house rented, subsidized	335	6%	113	4%	135	8%	36	15%	70	11%
Permanent supportive housing	86	2%	16	1%	14	1%	55	23%	0	0%
Staying or living with family, permanent tenure	388	7%	114	4%	229	14%	18	8%	33	5%
Staying or living with friend, permanent tenure	140	3%	49	2%	88	6%	6	3%	0	0%
<i>Subtotal</i>	2517	46%	613	21%	1049	66%	170	72%	620	97%
TEMPORARY DESTINATIONS										
Emergency shelter	997	18%	817	28%	57	4%	3	1%	2	0%
Transitional housing	368	7%	133	5%	159	10%	18	8%	7	1%
Staying or living with family, temporary tenure	230	4%	130	5%	84	5%	13	6%	0	0%
Staying or living with friend, temporary tenure	154	3%	45	2%	73	5%	9	4%	5	1%
Hotel or motel paid for without voucher	60	1%	32	1%	17	1%	1	0%	0	0%
Place not meant for human habitation	725	13%	839	29%	16	1%	0	0%	1	0%
Safe Haven	5	0%	6	0%	0	0%	0	0%	0	0%
<i>Subtotal</i>	2539	46%	2002	70%	406	25%	44	19%	15	2%
INSTITUTIONAL DESTINATIONS										
Psychiatric hospital/facility	32	1%	12	0%	20	1%	0	0%	0	0%
Substance abuse treatment facility	58	1%	27	1%	25	2%	3	1%	0	0%
Hospital (non-psychiatric)	44	1%	25	1%	17	1%	4	2%	0	0%
Jail, prison or juvenile detention facility	89	2%	14	0%	64	4%	8	3%	1	0%
Foster care home or foster care group home	9	0%	6	0%	3	0%	0	0%	0	0%
<i>Subtotal</i>	232	4%	84	3%	129	8%	15	6%	1	0%
OTHER										
Deceased	111	2%	103	4%	4	0%	2	1%	1	0%
Left with unknown destination	81	1%	72	3%	10	1%	4	2%	0	0%
<i>Subtotal</i>	192	4%	175	6%	14	1%	6	3%	0	0%
Total	5480	100%	2874	100%	1598	100%	235	100%	636	100%

Homelessness in Tucson/Pima County

Further Characteristics: Disabilities, Employment, & Education

For the Period from July 1, 2010 - June 30, 2011

For Adults only. Percentages of Disabilities, Employment at Entry, and Education are percentages of total responses within each characteristic.

CHARACTERISTIC	Total Unduplicated Persons		Emergency Shelters		Transitional Housing		Permanent Supportive Housing	
	Count	%	Count	%	Count	%	Count	%
DISABILITIES								
Has disability of long duration	3025	43%	917	29%	1222	61%	708	89%
<i>Types of Disabilities (may have more than one):</i>								
Alcohol Abuse	1566	52%	576	63%	900	74%	137	19%
Drug Abuse	1486	49%	464	51%	884	72%	175	25%
Mental Illness	1854	61%	770	84%	512	42%	422	60%
Chronic Health Condition or Medical Disability	696	23%	386	42%	178	15%	82	12%
Developmental Disability	221	7%	112	12%	72	6%	16	2%
Physical Disability	786	26%	452	49%	271	22%	47	7%
HIV/AIDS	213	7%	16	2%	16	1%	179	25%
Hearing or Vision Impairment	437	14%	286	31%	87	7%	26	4%
Other	83	3%	50	5%	25	2%	7	1%
EMPLOYMENT AT ENTRY								
Employed and not looking	501	11%	182	8%	244	17%	81	10%
Employed and looking	308	7%	115	5%	152	11%	74	9%
Unemployed but looking for work	2535	56%	1381	62%	741	53%	256	32%
Unemployed and not looking	1195	26%	560	25%	268	19%	392	49%
Total Responses	4539	100%	2238	100%	1405	100%	803	100%
EDUCATION								
No Schooling	18	0%	10	0%	4	0%	6	1%
Some Elementary School	248	5%	145	6%	49	4%	34	4%
Some High School	1137	24%	579	24%	317	23%	135	18%
HS Diploma	1479	31%	675	28%	490	35%	293	38%
GED	853	18%	434	18%	280	20%	126	17%
Post-Secondary School	1030	22%	557	23%	257	18%	169	22%
Total Responses	4765	100%	2400	100%	1397	100%	763	100%

Homelessness in Tucson/Pima County

Income and Benefits : Amounts & Sources of Income at Entry

For the Period from July 1, 2010 - June 30, 2011

Percentages for Cash Income Level are based on total adults. Percentages for Income Source are based on clients reporting income.

MONTHLY SOURCE OF INCOME	Total Unduplicated Persons		Emergency Shelters		Transitional Housing		Permanent Supportive Housing		HPRP	
	Count	%	Count	%	Count	%	Count	%	Count	%
CASH INCOME LEVEL (for clients with income)										
1 - 99	62	1%	38	1%	13	1%	9	1%	4	1%
100 - 249	213	3%	98	3%	65	3%	34	4%	27	5%
250 - 499	287	4%	118	4%	92	5%	53	7%	45	8%
500 - 749	689	10%	233	7%	188	9%	203	25%	61	11%
750 - 999	455	7%	135	4%	169	8%	92	12%	57	10%
1000 - 1499	669	10%	210	7%	361	18%	63	8%	78	14%
1500 - 1999	275	4%	64	2%	166	8%	19	2%	37	6%
2000+	178	3%	42	1%	113	6%	7	1%	29	5%
INCOME SOURCE										
Earned Income	1510	45%	475	42%	793	58%	124	23%	218	52%
Unemployment	279	8%	90	8%	96	7%	22	4%	76	18%
SSI	521	16%	174	15%	129	9%	186	34%	24	6%
SSDI	466	14%	179	16%	108	8%	151	28%	21	5%
VA Disability	93	3%	30	3%	44	3%	22	4%	8	2%
Private Disability	2	0%	1	0%	0	0%	0	0%	1	0%
Worker's Compensation	7	0%	5	0%	1	0%	0	0%	1	0%
TANF	155	5%	88	8%	37	3%	17	3%	19	5%
Social Security Retirement	54	2%	38	3%	14	1%	5	1%	0	0%
Veteran's Pension	109	3%	29	3%	85	6%	6	1%	5	1%
Child Support	125	4%	28	2%	56	4%	8	1%	44	10%
Alimony/Spousal Support	7	0%	1	0%	0	0%	1	0%	3	1%

Homelessness in Tucson/Pima County

Income and Benefits : Sources of Non-Cash Benefits at Entry

For the Period from July 1, 2010 - June 30, 2011

Percentages are based on total responses

SOURCE OF NON-CASH BENEFITS	Total Unduplicated Persons		Emergency Shelters		Transitional Housing		Permanent Supportive Housing		HPRP	
	Count	%	Count	%	Count	%	Count	%		%
Food Stamps/SNAP	3023	46%	1275	44%	1144	48%	282	42%	424	47%
Medicare	202	3%	104	4%	66	3%	36	5%	9	1%
AHCCCS	2765	42%	1238	43%	913	38%	298	44%	402	45%
WIC	101	2%	65	2%	32	1%	2	0%	12	1%
VA Medical	293	4%	131	5%	153	6%	40	6%	30	3%
TANF Child Care	50	1%	17	1%	37	2%	0	0%	0	0%
TANF Transportation	0	0%	0	0%	0	0%	0	0%	0	0%
Other TANF-Funded Services	12	0%	3	0%	4	0%	5	1%	0	0%
Section 8, Public Housing, or Other Rental Assistance	7	0%	2	0%	2	0%	3	0%	1	0%
Other	150	2%	75	3%	55	2%	10	1%	22	2%
Total Responses	6603	100%	2910	100%	2406	100%	676	100%	900	100%

Special Report : Youth - Unaccompanied Youth

For the Period from July 1, 2010 - June 30, 2011

Percentages are based on the total responses in each category.

	Under 18		18 - 21		22 -24	
TOTAL YOUTH CLIENTS	46		399		271	
GENDER						
Male	25	54%	249	63%	176	65%
Female	20	43%	147	37%	95	35%
Transgender	1	2%	0	0%	0	0%
ETHNICITY						
Hispanic/Latino	22	48%	142	35%	64	24%
Non-Hispanic/Non-Latino	24	52%	263	65%	205	76%
RACE						
American Indian or Alaska Native	1	2%	18	4%	17	6%
Asian	1	2%	0	0%	1	0%
Black or African American	8	17%	64	16%	46	17%
Native Hawaiian or Other Pacific Islander	0	0%	5	1%	1	0%
White	31	67%	297	74%	196	74%
Multi-Racial	5	11%	17	4%	4	2%
EMPLOYED						
Yes	0	0%	66	21%	24	14%
No	17	100%	249	79%	153	86%
CURRENTLY IN SCHOOL						
Yes	23	58%	83	25%	18	10%
No	17	43%	247	75%	165	90%
HIGHEST LEVEL OF EDUCATION						
Less Than High School	6	29%	13	4%	8	4%
Some High School	10	48%	183	52%	62	33%
High School Graduate	2	10%	95	27%	57	30%
GED	2	10%	43	12%	40	21%
Some College/Post-Secondary	1	5%	18	5%	18	10%
College Graduate	0	0%	0	0%	2	1%

Information contained in above report uses currently available data.

Special Report : Youth - Youth Parents

For the Period from July 1, 2010 - June 30, 2011

Percentages are based on the total responses in each category.

	18 - 21		22 -24	
TOTAL YOUTH CLIENTS	104		105	
GENDER				
Male	13	13%	17	16%
Female	91	88%	89	84%
Transgender	0	0%	0	0%
ETHNICITY				
Hispanic/Latino	46	44%	44	43%
Non-Hispanic/Non-Latino	58	56%	59	57%
RACE				
American Indian or Alaska Native	6	6%	5	5%
Asian	0	0%	0	0%
Black or African American	34	33%	20	20%
Native Hawaiian or Other Pacific Islander	0	0%	0	0%
White	57	55%	72	72%
Multi-Racial	7	7%	3	3%
EMPLOYED				
Yes	33	35%	31	46%
No	60	65%	37	54%
CURRENTLY IN SCHOOL				
Yes	38	38%	10	15%
No	62	62%	56	85%
HIGHEST LEVEL OF EDUCATION				
Less Than High School	3	3%	6	10%
Some High School	46	49%	17	28%
High School Graduate	28	30%	17	28%
GED	7	7%	9	15%
Some College/Post-Secondary	10	11%	12	20%
College Graduate	0	0%	0	0%

Information contained in above report uses currently available data.

Special Report : Youth - Youth in Families

For the Period from July 1, 2010 - June 30, 2011

Percentages are based on the total responses in each category.

Some fields do not meet our 60% data quality threshold and is provided for informational purposes only .

	Under 18		18 - 21		22 -24	
TOTAL YOUTH CLIENTS	1872		92		29	
GENDER						
Male	937	51%	33	36%	11	37%
Female	908	49%	59	64%	19	63%
Transgender	0	0%	0	0%	0	0%
ETHNICITY						
Hispanic/Latino	988	64%	41	45%	20	69%
Non-Hispanic/Non-Latino	556	36%	50	55%	9	31%
RACE						
American Indian or Alaska Native	122	7%	9	10%	3	10%
Asian	18	1%	0	0%	0	0%
Black or African American	323	18%	20	22%	5	17%
Native Hawaiian or Other Pacific Islander	12	1%	0	0%	0	0%
White	1288	72%	58	63%	20	69%
Multi-Racial	33	2%	5	5%	1	3%
EMPLOYED						
Yes	1	0%	6	12%	7	39%
No	658	100%	45	88%	11	61%
CURRENTLY IN SCHOOL						
Yes	779	70%	40	62%	1	6%
No	328	30%	25	38%	17	94%
HIGHEST LEVEL OF EDUCATION						
Less Than High School	105	71%	0	0%	1	6%
Some High School	38	26%	30	60%	10	59%
High School Graduate	1	1%	13	26%	3	18%
GED	2	1%	2	4%	1	6%
Some College/Post-Secondary	1	1%	4	8%	2	12%
College Graduate	0	0%	1	2%	0	0%

Information contained in above report uses currently available data.

Point-in-Time Reports

One Day Snapshot
on June 30, 2011

Homelessness in Tucson/Pima County

Demographics: Gender & Age

Point-in-Time on June 30, 2011

CHARACTERISTIC	Total Unduplicated Persons		Emergency Shelters		Transitional Housing		Permanent Supportive Housing		HPRP		Non-Residential Programs	
	Count	%	Count	%	Count	%	Count	%	Count	%	Count	%
GENDER												
Male	2357	59%	400	73%	607	55%	451	55%	274	42%	875	76%
Female	1610	40%	142	26%	500	45%	359	44%	379	57%	282	24%
Transgender	3	0%	0	0%	1	0%	0	0%	0	0%	1	0%
Unknown/refused	11	0%	5	1%	3	0%	5	1%	7	1%	0	0%
AGE												
0-5	380	10%	47	9%	168	15%	30	4%	130	20%	7	1%
6-8	159	4%	19	3%	48	4%	25	3%	60	9%	2	0%
9-12	206	5%	15	3%	67	6%	32	4%	81	12%	2	0%
13-15	113	3%	7	1%	31	3%	28	3%	40	6%	5	0%
16-17	79	2%	2	0%	26	2%	10	1%	26	4%	4	0%
18-24	381	10%	49	9%	186	17%	44	5%	50	8%	100	9%
25-34	562	14%	84	15%	148	13%	98	12%	102	15%	173	15%
35-44	646	16%	91	17%	131	12%	151	19%	86	13%	251	22%
45-61	1274	32%	202	37%	269	24%	323	40%	71	11%	563	49%
62+	170	4%	25	5%	34	3%	69	8%	8	1%	51	4%
Age Not Specified	11	0%	6	1%	3	0%	5	1%	6	1%	0	0%

Homelessness in Tucson/Pima County

Demographics: Ethnicity, Race, Veterans, Domestic Violence Victims, Disabilities, and Unaccompanied Youth Point-in-Time on June 30, 2011

CHARACTERISTIC	Total Unduplicated Clients		Emergency Services		Transitional Housing		Permanent Housing		HPRP		Non-Residential Services	
	Count	%	Count	%	Count	%	Count	%	Count	%	Count	%
ETHNICITY												
Hispanic/Latino	1306	33%	173	32%	403	36%	212	26%	353	53%	217	19%
Non-Hispanic/Non-Latino	2627	66%	356	65%	697	63%	593	73%	299	45%	931	80%
Unknown/refused	48	1%	18	3%	11	1%	10	1%	8	1%	10	1%
RACE												
American Indian/Alaska Native	172	4%	21	4%	51	5%	18	2%	26	4%	74	6%
Asian	25	1%	1	0%	15	1%	2	0%	3	0%	3	0%
Black/African-American	556	14%	56	10%	182	16%	103	13%	75	11%	190	16%
Native Hawaiian or Other Pacific Islander	14	0%	0	0%	2	0%	2	0%	2	0%	9	1%
White	2844	71%	397	73%	751	68%	621	76%	497	75%	779	67%
Other Multi-Racial	200	5%	33	6%	62	6%	49	6%	20	3%	61	5%
Don't Know/Refused	127	3%	32	6%	37	3%	7	1%	29	4%	28	2%
Not Specified	43	1%	7	1%	11	1%	13	2%	8	1%	14	1%
OTHER												
Veteran	447	15%	48	11%	214	28%	102	15%	23	7%	141	12%
Domestic Violence Victim	461	12%	74	14%	220	20%	80	10%	18	3%	96	8%
Disability of Long Duration	1496	38%	163	30%	363	33%	605	74%	46	7%	467	40%

Homelessness in Tucson/Pima County

Households

Point-in-Time on June 30, 2011

Percents calculated from total persons in singles or in households. Some clients are shown as Singles and Persons in Households due to multiple program entries.

CHARACTERISTIC	Total Unduplicated Persons		Emergency Shelters		Transitional Housing		Permanent Supportive Housing		HPRP		Non-Residential Programs	
	Count	%	Count	%	Count	%	Count	%	Count	%	Count	%
SINGLES												
Adult Males	2311	51%	1084	84%	357	36%	344	38%	22	4%	858	56%
Adult Females	663	15%	62	5%	139	14%	203	22%	40	7%	270	18%
Adult Transgender	3	0%	1	0%	1	0%	0	0%	0	0%	1	0%
Unaccompanied Youth Males	22	0%	12	1%	6	1%	3	0%	0	0%	1	0%
Unaccompanied Youth Females	18	0%	6	0%	9	1%	1	0%	0	0%	2	0%
Total	3017	67%	1165	90%	512	51%	551	61%	62	10%	1132	74%
PERSONS IN HOUSEHOLDS												
Adult Male	220	5%	11	1%	49	5%	82	9%	77	13%	363	24%
Adult Female	476	11%	36	3%	150	15%	132	15%	154	26%	11	1%
Children (<18) Males	408	9%	42	3%	142	14%	68	8%	152	26%	12	1%
Children (<18) Females	405	9%	36	3%	149	15%	70	8%	147	25%	5	0%

Glossary

AHCCCS - Arizona Health Care Cost Containment System: Arizona's Medicaid Agency and State Children's Health Insurance Program (KidsCare). AHCCCS is responsible for providing federal and state funded health insurance to qualifying Arizonans.

Adults - Anyone who is 18 years old or older.

Children - Anyone 17 years old or younger.

Chronically Homeless - a chronically homeless person is either (1) an unaccompanied homeless individual with a disabling condition who has been continuously homeless for a year or more, OR (2) an unaccompanied individual with a disabling condition who has had at least four episodes of homelessness in the past three years.

Disability of Long Duration - A disabling condition in reference to chronic homelessness is defined by HUD as a diagnosable substance use disorder, serious mental illness, developmental disability, or chronic physical illness or disability, including the co-occurrence of two or more of these conditions. A disabling condition of long duration limits an individual's ability to work or perform one or more activities of daily living.

Domestic Violence (DV) - Occurs when a family member, partner or ex-partner attempts to physically or psychologically dominate another. Domestic violence can include physical violence, sexual abuse, emotional abuse, intimidation, economic deprivation, and threats of violence.

Emergency Shelter - Any facility whose primary purpose is to provide temporary shelter for those who are experiencing homelessness in general or for specific populations of homeless people. This can also include emergency motel/hotel voucher assistance.

HMIS (Homeless Management Information System) - Computerized data collection tool designed to capture client-level information over time on the characteristics and service needs of men, women, and children experiencing homelessness.

Household - One or more individuals who live together. Households with children are defined as one adult and one child, or households with an unaccompanied youth only, or households with multiple children only (e.g., juvenile parent and child).

HPRP (Homelessness Prevention and Rapid Re-Housing Program)- This program was established under TitleXII of Division A of the American Recovery and Reinvestment Act of 2009, ("Recovery Act"). The purpose of the HPRP is to provide homelessness prevention assistance to households who would otherwise become homeless. In addition, HPRP is designed to provide assistance to rapidly re-house persons who are homeless.

Medicaid - A program in the United States, jointly funded by the states and the federal government, that reimburses hospitals and physicians for providing care to qualifying people who cannot finance their own medical expenses. See also AHCCCS.

Medicare - A program under the U.S. Social Security Administration that reimburses hospitals and physicians for medical care provided to qualifying people over 65 years old.

Non-Residential Services - Represents any programming and supportive services offered to homeless participants that does not consist of housing or shelter. Examples of Non-Residential Services can include, but is not limited to, outreach, day or drop-in centers, food assistance, and employment programs.

Permanent Supportive Housing - Long-term, community-based housing that has supportive services for homeless persons with disabilities. This type of supportive housing enables the special needs populations to live independently as possible in a permanent setting. Permanent housing can be provided in one structure or in several structures at one site or in multiple structures at scattered sites.

Point in Time (PIT) - A snapshot of the homeless population taken on a given day. Since 2005, HUD requires all Continuum of Care applicants to complete this count every other year in the last week of January. This count includes a street count in addition to a count of all clients in emergency and transitional beds. However, a Point in Time as referred to in this document represents only those participants who were accessing and enrolled in services on a designated day (i.e. June 30^h) as reported in HMIS.

Safe Haven - A form of supportive housing that serves hard-to-reach homeless persons with severe mental illness who are on the streets and have been unable or unwilling to participate in supportive services.

SCHIP (State Children's Health Insurance Program) - A program administered by the United States Department of Health and Human Services that provides matching funds to states for health insurance to families with children. The program was designed with the intent to cover uninsured children in families with incomes that are modest but too high to qualify for Medicaid.

Section 8 - Private rental units that qualify for federal subsidies on behalf of low-income tenants who pay a limited portion of their income for rent.

SNAP - Special Needs Assistance Program. *Formerly food stamps.*

SSI (Supplemental Security Income) - A monthly stipend provided to aged (legally deemed to be 65 or older), blind, or disabled persons based on need, paid by the U.S. Government.

SSDI (Social Security Disability Insurance) - A wage replacement income for individuals who have worked and paid FICA taxes and who now have a disability meeting Social Security disability rules.

TANF (Temporary Assistance for Needy Families) - Provides cash assistance to indigent American families with dependent children through the United States Department of Health and Human Services. *Formerly Welfare.*

Transitional Housing - A project that has its purpose facilitating the movement of homeless individuals and families to permanent housing within a reasonable amount of time (usually 24 months).

Transgender - An umbrella term used to describe the non-identification with, or non-presentation as, the sex (and assumed gender) one was assigned at birth.

Unaccompanied Youth - Minors or young adults (generally under age 22) who are not in the physical custody of a parent or guardian, including those living in inadequate housing such as shelters, cars, or on the streets. Also includes those who have been denied housing by their families and school-age unwed mothers who have no housing of their own.

Unduplicated (Count) -An unduplicated count ensures that individuals are counted only once regardless of the number of times they entered or exited the homeless system or the number of programs in which they participated.

VA (Veterans Affairs) - A government-run military veteran benefit system. It is responsible for administering programs of veterans' benefits for veterans, their families, and survivors. The benefits provided include disability compensation, pension, education, home loans, life insurance, vocational rehabilitation, survivors' benefits, medical benefits, and burial benefits.

WIC- Women Infants and Children- Provides Federal grants to States for supplemental foods, health care referrals, and nutrition education for low-income pregnant, breastfeeding, and non-breastfeeding postpartum women, and to infants and children up to age five who are found to be at nutritional risk.

Zip Code of Last Permanent Housing - The U.S. Postal Service zip code area of the last stable residence a participant has lived for 90 days or more.

Agencies Providing Data

Arizona Housing and Prevention Services
City of Tucson, Housing and Community Development Department
CODAC Behavioral Health Services
Comin' Home
Compass Health Care
COPE Community Services, Inc.
Community Partnership of Southern Arizona (CPSA)
Esperanza En Escalante
The Giving Tree
Gospel Rescue Mission
La Frontera Center
La Paloma Family Services, Inc.
New Beginnings for Women and Children
Old Pueblo Community Services
Open Inn
Our Family Services
Pima County, Department of Community Development and Neighborhood Conservation
Pio Decimo Center
Primavera Foundation
The Salvation Army
Southern Arizona AIDS Foundation
Sullivan-Jackson Employment Center
TMM Family Services

For More Information

Pima County Community Development &
Neighborhood Conservation
Lead HMIS Agency
Margaret Kish
(520) 243-6745
margaret.kish@pima.gov

TPCH Co-Chairs

Steven Nelson
Sullivan-Jackson Employment Center
Pima County
(520) 838-3300
steve.nelson@pima.gov

Symmetric Solutions, Inc.
HMIS Implementation Consultant
Don Logue
(480) 203-8861
dlogue@symmetricsolutions.com

Lisa Griffin
Open Inn, Inc.
(520) 670-9040
lgriffin@openinn.org

HMIS Committee Co-Chairs

Pam Moseley
Pima County
(520) 243-6750
pamela.moseley@pima.gov

Celeste Reynolds
The Salvation Army
(520) 409-8811
celeste.reynolds@usw.salvationarmy.org

Resources

Tucson Pima Collaboration to End Homelessness (TPCH) www.tpch.org

HUD Homeless Resource Exchange www.hudhre.info

HUD Annual Homeless Assessment Report/HUD Homeless Data Exchange www.hudhdx.info